

SWEAT PANTS

COLLECTION



Sweatpants&Jogger

Because bead cloth absorbs sweat and is not easy to deform, it is generally used as a T-shirt and sportswear. POLO shirts from many big brands are made of beaded cloth. Even in the heat of the summer, it can give us a gentle touch, comfortable enjoyment.



About sweatpants

Because bead cloth absorbs sweat and is not easy to deform, it is generally used as a T-shirt and sportswear. POLO shirts from many big brands are made of beaded cloth



The environment

Even in the heat of the summer, it can give us a gentle touch, comfortable enjoyment.



Washing

Soft and random appearance, no deformation after washing, machine washing does not deformation



The fabric information

Texture is fine and smooth soft fabric texture is fine and feel smooth and soft, carefully woven texture can be seen

Precise fabric woven with uniform thickness yarn thick and clear texture is naturally not easy to fade

Want to add size, color, fabric, shape? Contact us for you to achieve!



The processes we can make for this label

UV process/bronzing silver process/ concave and convex process/Plm covering process/glue dropping process/Backing process



About the rope

Webbing categories are: cotton belt (cotton herringbone belt, cotton plain belt, cotton belt, cotton head belt, pants rope belt, etc.), nylon rope belt, PP rope belt, polyester rope belt, rayon rope belt and other various rope belt

Elastic categories include: mercerized rubber band, horse elastic band, knitted (Bat) rubber band, round rubber band, velvet belt or velvet elastic band for bra, etc.



Back of model

Please contact us to start making your samples!



Sweatpants&Jogger

This hoodie adopts batik process to form a unique color texture, the effect of aging slightly white, is also a popular technique in recent years, different from the traditional color hoodie, more has its charm and texture, the fabric is also very heavy weight match winter is no problem



About sweatpants

They can be made into sweatpants, or they can be made into other leggings. Long pants with soft fabric and direct contact with the body are suitable for spring and autumn wear. Some of them have fleece in them. You know, the thick stuff.



Collocation

It is generally a hoodie with the shape, the pants with cotton material. What we know about hoodies is reinforced by hoodies.



Loose and slim

There are also loose-fitting and slim-fitting versions. They are also available in loose, casual and slim fashion versions.



The fabric information

Texture is fine and smooth soft fabric texture is fine and feel smooth and soft, carefully woven texture can be seen

Precise fabric woven with uniform thickness yarn thick and clear texture is naturally not easy to fade

Want to add size, color, fabric, shape? Contact us for you to achieve!



The processes we can make for this label

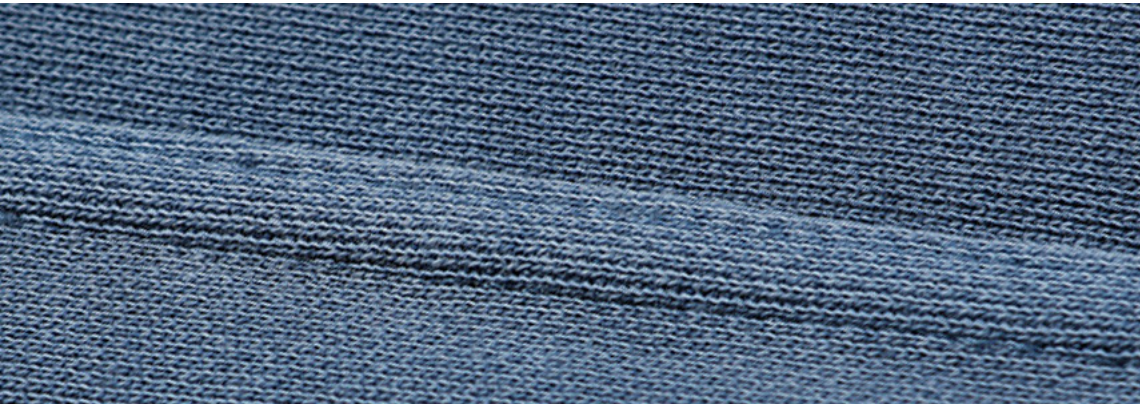
UV process/bronzing silver process/ concave and convex process/Plm covering process/glue dropping process/Backing process



About the rope

Webbing categories are: cotton belt (cotton herringbone belt, cotton plain belt, cotton belt, cotton head belt, pants rope belt, etc.), nylon rope belt, PP rope belt, polyester rope belt, rayon rope belt and other various rope belt

Elastic categories include: mercerized rubber band, horse elastic band, knitted (Bat) rubber band, round rubber band, velvet belt or velvet elastic band for bra, etc.



Back of model

Please contact us to start making your samples!

Sweatpants&Jogger

Because bead cloth absorbs sweat and is not easy to deform, it is generally used as a T-shirt and sportswear. POLO shirts from many big brands are made of beaded cloth. Even in the heat of the summer, it can give us a gentle touch, comfortable enjoyment.



CREAM COLOR
A&W COUPLE MODELS
#light blue



CREAM COLOR
A&W COUPLE MODELS
#Light purple



CREAM COLOR
A&W COUPLE MODELS
black

About sweatpants

Because bead cloth absorbs sweat and is not easy to deform, it is generally used as a T-shirt and sportswear. POLO shirts from many big brands are made of beaded cloth

The environment

Even in the heat of the summer, it can give us a gentle touch, comfortable enjoyment.

Washing

Soft and random appearance, no deformation after washing, machine washing does not deformation



The fabric information

Texture is Pne and smooth soft fabric texture is Pne and feel smooth and soft, carefully woven texture can be seen

Precise fabric woven with uniform thickness yarn thick and clear texture is naturally not easy to fade

Want to add size, color, fabric, shape? Contact us for you to achieve!



The processes we can make for this label

UV process/bronzing silver process/ concave and convex process/Plm covering process/glue dropping process/ Bocking process



About the rope

Webbing categories are: cotton belt (cotton herringbone belt, cotton plain belt, cotton belt, cotton head belt, pants rope belt, etc.), nylon rope belt, PP rope belt, polyester rope belt, rayon rope belt and other various rope belt

Elastic categories include: mercerized rubber band, horse elastic band, knitted (Bat) rubber band, round rubber band, velvet belt or velvet elastic band for bra, etc.



Back of model

Please contact us to start making your samples!



Sweatpants&Jogger

High-quality sweatPants series, using high-grade fabrics and cutting, to meet the needs of unlimited, gender free, cross-scene, full-size wear and match. Provide the ideal choice for



About sweatpants

They can be made into sweatpants, or they can be made into other leggings. Long pants with soft fabric and direct contact with the body are suitable for spring and autumn wear. Some of them have fleece in them. You know, the thick stuff.



Collocation

It is generally a hoodie with the shape, the pants with cotton material. What we know about hoodies is reinforced by hoodies.



Loose and slim

There are also loose-fitting and slim-fitting versions. They are also available in loose, casual and slim fashion versions.



The fabric information

Texture is fine and smooth soft
 fabric texture is fine and feel
 smooth and soft, carefully woven
 texture can be seen

Precise fabric woven with uniform
 thickness yarn thick and clear tex-
 ture is naturally not easy to fade

Want to add size, color, fabric,
 shape? Contact us for you to
 achieve!



The processes we can make for this label

UV process/bronzing silver process/ concave and convex
 process/Plm covering process/glue dropping process/
 Boeking process



About the rope

Webbing categories are: cotton belt (cotton herringbone belt, cotton plain
 belt, cotton belt, cotton head belt, pants rope belt, etc.), nylon rope belt, PP
 rope belt, polyester rope belt, rayon rope belt and other various rope belt

Elastic categories include: mercerized rubber band, horse elastic band, knitted
 (Bat) rubber band, round rubber band, velvet belt or velvet elastic band for
 bra, etc.



Back of model

Please contact us to start making your samples!



Sweatpants&Jogger

High-quality sweatPants series, using high-grade fabrics and cutting, to meet the needs of unlimited, gender free, cross-scene, full-size wear and match. Provide the ideal choice for



About sweatpants

They can be made into sweatpants, or they can be made into other leggings. Long pants with soft fabric and direct contact with the body are suitable for spring and autumn wear. Some of them have fleece in them. You know, the thick stuff.



Collocation

It is generally a hoodie with the shape, the pants with cotton material. What we know about hoodies is reinforced by hoodies.



Loose and slim

There are also loose-fitting and slim-fitting versions. They are also available in loose, casual and slim fashion versions.



The fabric information

Texture is Pne and smooth soft
fabric texture is Pne and feel
smooth and soft, carefully woven
texture can be seen

Precise fabric woven with uniform
thickness yarn thick and clear tex-
ture is naturally not easy to fade

Want to add size, color, fabric,
shape? Contact us for you to
achieve!



The processes we can make for this label

UV process/bronzing silver process/ concave and convex
process/Plm covering process/glue dropping process/
Bocking process



About the rope

Webbing categories are: cotton belt (cotton herringbone belt, cotton plain
belt, cotton belt, cotton head belt, pants rope belt, etc.), nylon rope belt, PP
rope belt, polyester rope belt, rayon rope belt and other various rope belt

Elastic categories include: mercerized rubber band, horse elastic band, knitted
(Bat) rubber band, round rubber band, velvet belt or velvet elastic band for
bra, etc.

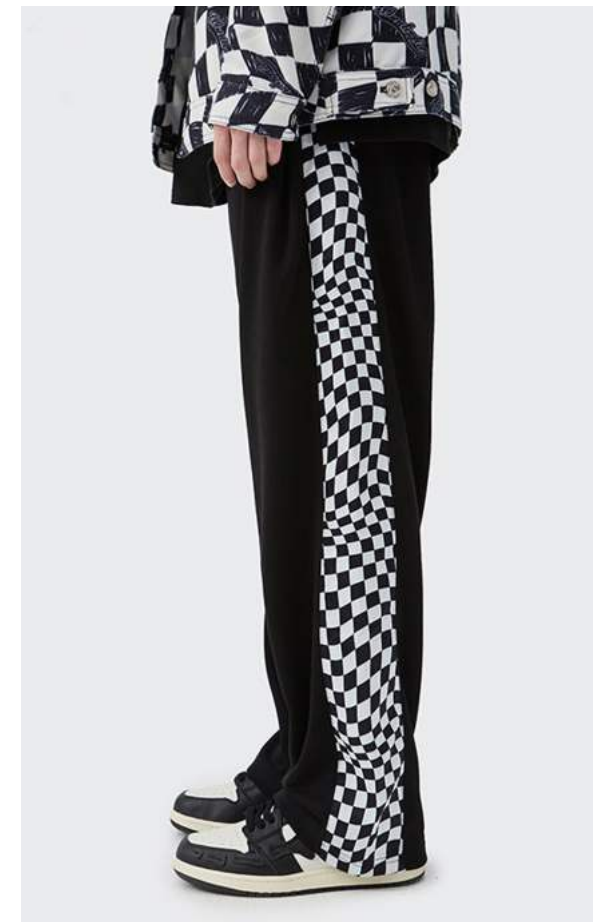


Back of model

Please contact us to start making your samples!

Sweatpants&Jogger

High-quality sweatPants series, using high-grade fabrics and cutting, to meet the needs of unlimited, gender free, cross-scene, full-size wear and match.. Provide the ideal choice for



About sweatpants

They can be made into sweatpants, or they can be made into other leggings. Long pants with soft fabric and direct contact with the body are suitable for spring and autumn wear. Some of them have fleece in them. You know, the thick stuff.



Collocation

It is generally a hoodie with the shape, the pants with cotton material. What we know about hoodies is reinforced by hoodies.



Loose and slim

There are also loose-fitting and slim-fitting versions. They are also available in loose, casual and slim fashion versions.



The fabric information

Texture is Pne and smooth soft
fabric texture is Pne and feel
smooth and soft, carefully woven
texture can be seen

Precise fabric woven with uniform
thickness yarn thick and clear tex-
ture is naturally not easy to fade

Want to add size, color, fabric,
shape? Contact us for you to
achieve!



The processes we can make for this label

UV process/bronzing silver process/ concave and convex
process/Plm covering process/glue dropping process/
Bocking process



About the rope

Webbing categories are: cotton belt (cotton herringbone belt, cotton plain
belt, cotton belt, cotton head belt, pants rope belt, etc.), nylon rope belt, PP
rope belt, polyester rope belt, rayon rope belt and other various rope belt

Elastic categories include: mercerized rubber band, horse elastic band, knitted
(Bat) rubber band, round rubber band, velvet belt or velvet elastic band for
bra, etc.



Back of model

Please contact us to start making your samples!



Sweatpants&Jogger

High-quality sweatPants series, using high-grade fabrics and cutting, to meet the needs of unlimited, gender free, cross-scene, full-size wear and match. Provide the ideal choice for



About sweatpants

They can be made into sweatpants, or they can be made into other leggings. Long pants with soft fabric and direct contact with the body are suitable for spring and autumn wear. Some of them have fleece in them. You know, the thick stuff.



Collocation

It is generally a hoodie with the shape, the pants with cotton material. What we know about hoodies is reinforced by hoodies.



Loose and slim

There are also loose-fitting and slim-fitting versions. They are also available in loose, casual and slim fashion versions.



The fabric information

Texture is fine and smooth soft fabric texture is fine and feel smooth and soft, carefully woven texture can be seen

Precise fabric woven with uniform thickness yarn thick and clear texture is naturally not easy to fade

Want to add size, color, fabric, shape? Contact us for you to achieve!



The processes we can make for this label

UV process/bronzing silver process/ concave and convex process/Plm covering process/glue dropping process/ Bocking process



About the rope

Webbing categories are: cotton belt (cotton herringbone belt, cotton plain belt, cotton belt, cotton head belt, pants rope belt, etc.), nylon rope belt, PP rope belt, polyester rope belt, rayon rope belt and other various rope belt

Elastic categories include: mercerized rubber band, horse elastic band, knitted (Bat) rubber band, round rubber band, velvet belt or velvet elastic band for bra, etc.



Back of model

Please contact us to start making your samples!

Sweatpants&Jogger

High-quality MONKEY WASH series, using high-grade fabrics and tailoring, to meet the needs of no boundaries, no gender, cross-scene, full-size wear and match. Provide the ideal choice for your brand.



Navy blue

Blue is tolerance. Blue is love. The symbolic meaning of blue is: peace, depth, distance, cold, melancholy, gentleness. The darker the blue, the more it takes us to infinity.



Dark green

Green is the color of plants. It can represent life and the state of life. Dark green represents the mature and changing state of life.



Dark red

crimson: this kind of color makes the story atmosphere of abstruse, melancholy more easily, what convey is sedate, mature, noble psychological experience.



The fabric information

Texture is Pne and smooth soft
fabric texture is Pne and feel
smooth and soft, carefully woven
texture can be seen

Precise fabric woven with uniform
thickness yarn thick and clear tex-
ture is naturally not easy to fade

Want to add size, color, fabric,
shape? Contact us for you to
achieve!



The processes we can make for this label

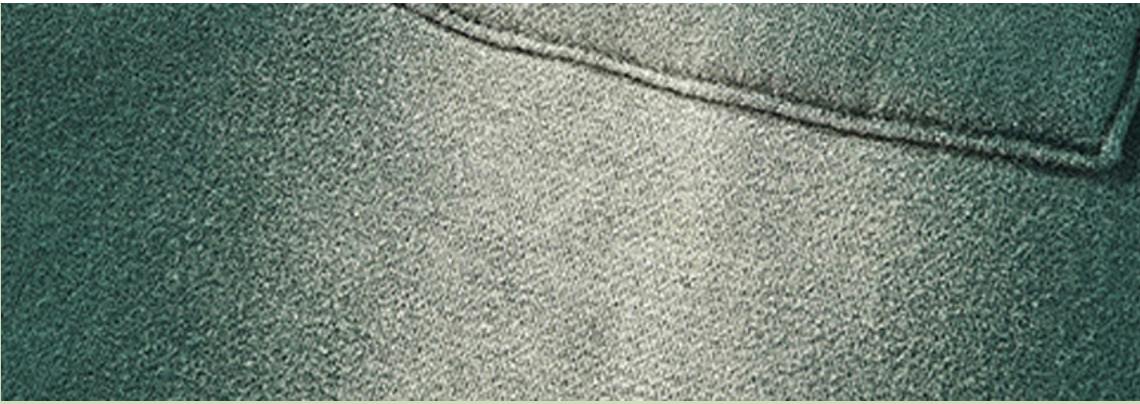
UV process/bronzing silver process/ concave and convex
process/Plm covering process/glue dropping process/
Bocking process



About the rope

Webbing categories are: cotton belt (cotton herringbone belt, cotton plain
belt, cotton belt, cotton head belt, pants rope belt, etc.), nylon rope belt, PP
rope belt, polyester rope belt, rayon rope belt and other various rope belt

Elastic categories include: mercerized rubber band, horse elastic band, knitted
(Bat) rubber band, round rubber band, velvet belt or velvet elastic band for
bra, etc.



Back of model

Please contact us to start making your samples!