

TUOZHEN®
拓真

FULL
EVER
COLLECTION





Pullover conventional

Spring and autumn season Pullover is the first choice, Pullover is worth investing in spring and autumn single products, Pullover generally appears wide, is a very popular casual clothing. Pullover can be both stylish and functional. Because of the combination of comfort and fashion, Pullover have become the first choice



About the Pullover

Slim clothes may not suit everyone, and the straight feeling will make those who prefer casual feel constrained, choose a loose jumper, not only feel comfortable and casual, but also with a scarf, blouse can achieve a variety of effects.



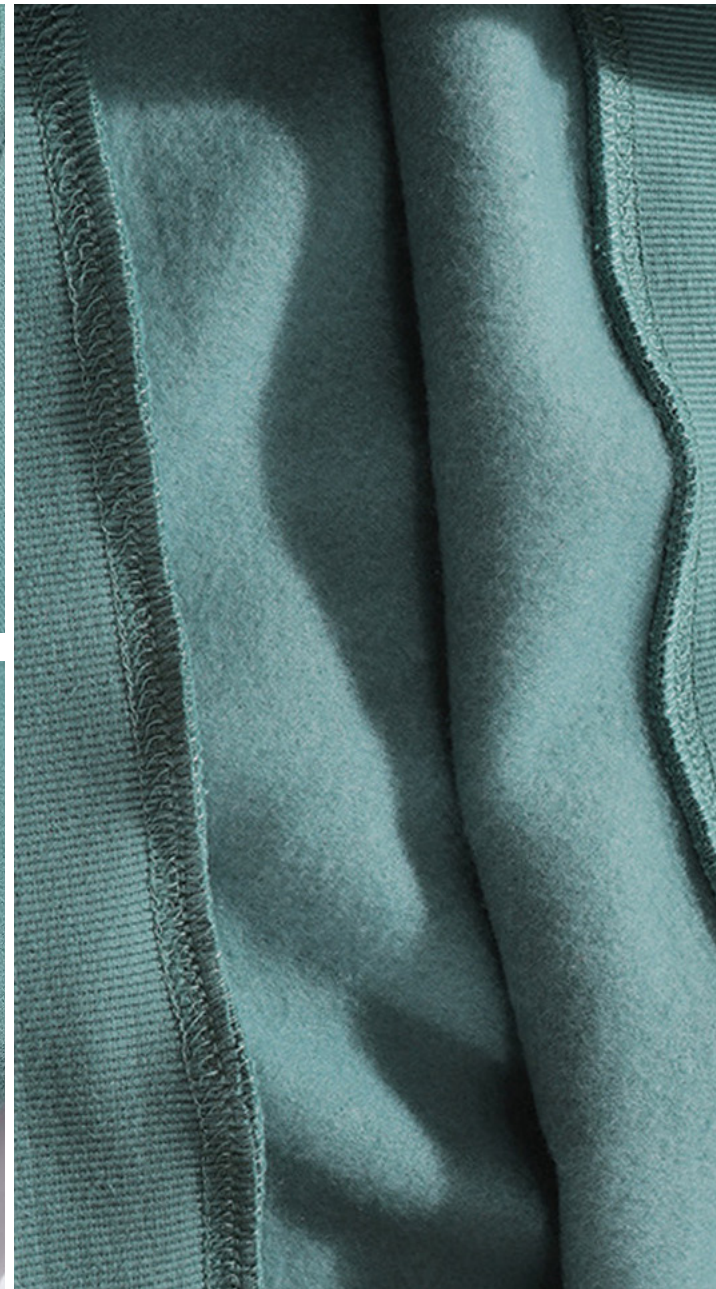
Trends

Once considered "corny", schooly and unkempt, the "shirt and jumper" combination has become a new trend. You can create a 1950s American college campus look with a sweet crewneck blouse, a tight-fitting sweater and a pompous skirt, or you can pair a large sweater with a denim shirt or a plaid shirt for a 1990s grunge look.



You can design

In addition to lace, such garments may be printed, knitted, or otherwise decorated with advertisements, pictures, or words, and the hem is usually hemmed.



The fabric information

.....

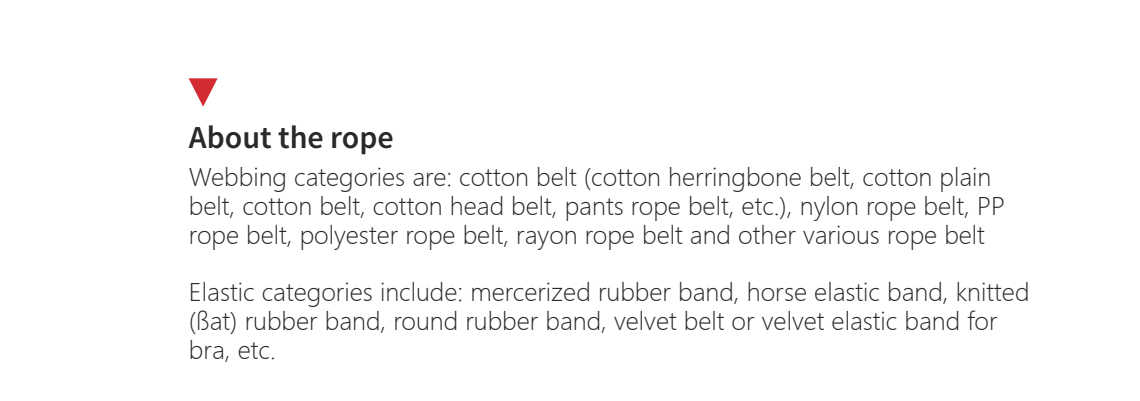
Texture is Pne and smooth soft fabric texture is Pne and feel smooth and soft, carefully woven texture can be seen

Precise fabric woven with uniform thickness yarn thick and clear texture is naturally not easy to fade

Want to add size, color, fabric, shape? Contact us for you to achieve!



▼ **The processes we can make for this label**
UV process/bronzing silver process/ concave and convex process/Plm covering process/glue dropping process/ Bocking process



▼ **About the rope**
Webbing categories are: cotton belt (cotton herringbone belt, cotton plain belt, cotton belt, cotton head belt, pants rope belt, etc.), nylon rope belt, PP rope belt, polyester rope belt, rayon rope belt and other various rope belt

Elastic categories include: mercerized rubber band, horse elastic band, knitted (Bat) rubber band, round rubber band, velvet belt or velvet elastic band for bra, etc.



▲ **Back of model**
Please contact us to start making your samples!



Pullover snow wash

High-quality Snow Wash series, using high-grade fabrics and cuts, to meet the needs of borderless, gender-free, cross-scene, full-size wear and match. Provide the ideal choice for



AQUAMARINE BLUE

This intermediate color between blue and green symbolizes lake water, so aqua and turquoise are also turquoise. The word can also refer to turquoise, a prized mineral that is often used to make jewelry. It's very Indian from the Middle East and the American Southwest.



Mei red

Rose in gemstone means rose. The color of rose in zircon is rose, which is an embodiment of pink. Compared with pink, it is dimmer but bright, with conspicuous color.



Light purple

In Chinese tradition, purple is the color of dignity. For example, the Forbidden City in Beijing is also called "the Forbidden City", and there is also the so-called "purple gas from the east". Due to this influence, purple is still revered by the Japanese royal family today. This stems from the ancient Chinese worship of the North Star



The fabric information

Texture is Pne and smooth soft fabric texture is Pne and feel smooth and soft, carefully woven texture can be seen

Precise fabric woven with uniform thickness yarn thick and clear texture is naturally not easy to fade

Want to add size, color, fabric, shape? Contact us for you to achieve!



The processes we can make for this label

UV process/bronzing silver process/ concave and convex process/Plm covering process/glue dropping process/ Bocking process



About the rope

Webbing categories are: cotton belt (cotton herringbone belt, cotton plain belt, cotton belt, cotton head belt, pants rope belt, etc.), nylon rope belt, PP rope belt, polyester rope belt, rayon rope belt and other various rope belt

Elastic categories include: mercerized rubber band, horse elastic band, knitted (Bat) rubber band, round rubber band, velvet belt or velvet elastic band for bra, etc.



Back of model

Please contact us to start making your samples!



Pullover Printing process

The appearance and wide application of glue after water paste, because its coverage is very good, so that dark clothes can also be printed on any light color, and there is a certain gloss



Rubber print

Excellent covering power, can be printed on deep color, such as black fabric, the product is similar to the discharge printing effect

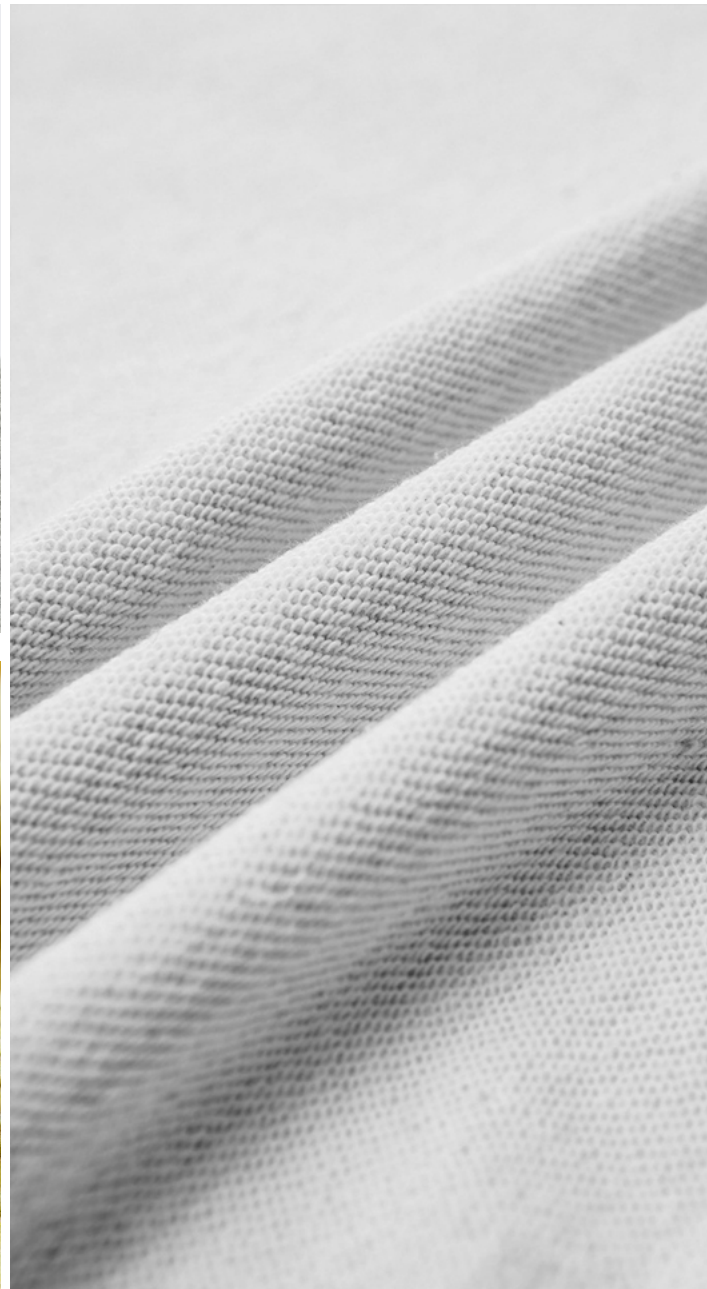
It has excellent Plm forming property, the Plm is pliable, smooth, elastic and shiny

Product features

The compatibility of color coating is good, the fabric has good fastness after printing, does not block the net, and the equipment is easy to clean

Advantage

Light resistance, heat resistance, aging resistance, no yellowing and no discoloration, good mechanical stability and storage stability.



.....

Woolen cloth is usually thicker, the woolen part can hold more air, so it is warm, and is used for autumn and winter clothing. The fur ring part can be processed into Bannelette after wool pulling, which has a more light and soft feel and better thermal performance



Our introduction to printing

We can do more than 90 percent of the printing on the market. Tell me what you want to achieve. We have professional designers and craftsmen



About the custom

Tuozhen professional customized consultant will make renderings for you free of charge. In the renderings, you can more intuitively view the position/matching effect of the selected undershirt + customized pattern. In addition, the consultant will give you a quick and accurate quotation according to the effect chart.



Back of model

Please contact us to start making your samples!



Pullover snow wash

High-quality Snow Wash series, using high-grade fabrics and cuts to meet the needs of borderless, gender-free, cross-scene, full-size wear and match. Provide the ideal choice for



AQUAMARINE BLUE

This intermediate color between blue and green symbolizes lake water, so aqua and turquoise are also turquoise. The word can also refer to turquoise, a prized mineral that is often used to make jewelry. It's very Indian from the Middle East and the American Southwest.



Mei red

Rose in gemstone means rose. The color of rose in zircon is rose, which is an embodiment of pink. Compared with pink, it is dimmer but bright, with conspicuous color.



Light purple

In Chinese tradition, purple is the color of dignity. For example, the Forbidden City in Beijing is also called "the Forbidden City", and there is also the so-called "purple gas from the east". Due to this influence, purple is still revered by the Japanese royal family today. This stems from the ancient Chinese worship of the North Star



The fabric information

Texture is Pne and smooth soft fabric texture is Pne and feel smooth and soft, carefully woven texture can be seen

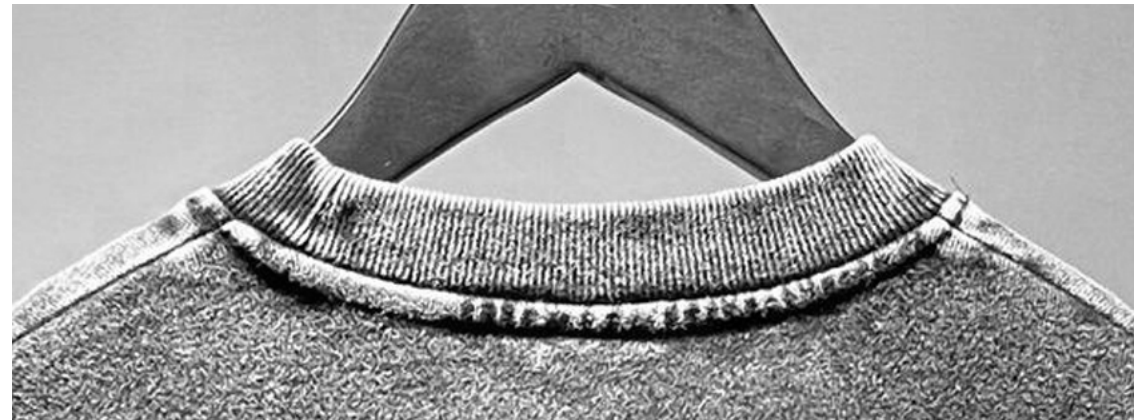
Precise fabric woven with uniform thickness yarn thick and clear texture is naturally not easy to fade

Want to add size, color, fabric, shape? Contact us for you to achieve!



The processes we can make for this label

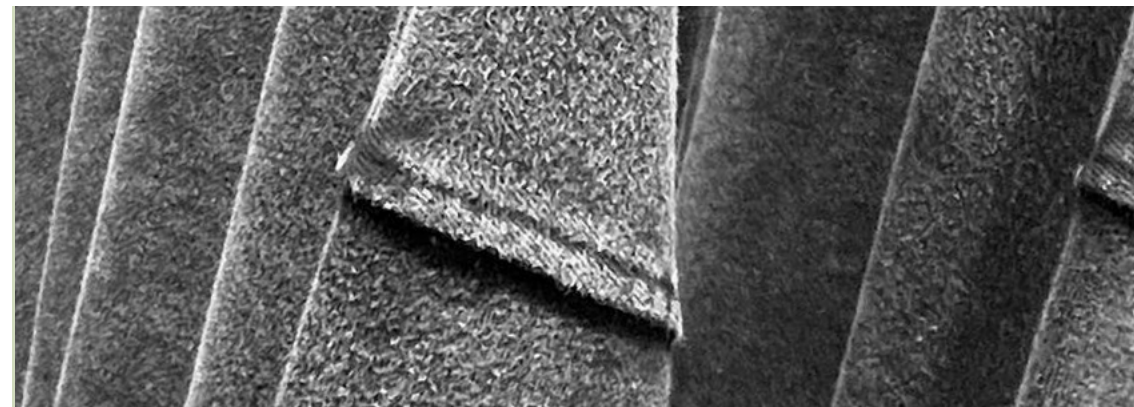
UV process/bronzing silver process/ concave and convex process/Plm covering process/glue dropping process/ Bocking process



About the rope

Webbing categories are: cotton belt (cotton herringbone belt, cotton plain belt, cotton belt, cotton head belt, pants rope belt, etc.), nylon rope belt, PP rope belt, polyester rope belt, rayon rope belt and other various rope belt

Elastic categories include: mercerized rubber band, horse elastic band, knitted (Bat) rubber band, round rubber band, velvet belt or velvet elastic band for bra, etc.



Back of model

Please contact us to start making your samples!



Pullover snow wash

DTG has become one of the most convenient ways to print clothing, entering the market in a sustainable and environmentally friendly way. The printing technology is in response to a rise in demand for more eco-conscious textile production.



DTG printing technology

DTG printing is a fully automatic process to reduce manual errors and ensure the consistency of each textile in each parameter.



Reduce waste

Customized without quantity requirements, small batch can also be produced, according to the production of textiles can accurately control the amount of ink, to maximize the standard of environmental technology



User friendly

The inks and preconditioning liquids used are water-based and not harmful to health.



The fabric information



Texture is Pne and smooth soft fabric texture is Pne and feel smooth and soft, carefully woven texture can be seen

Precise fabric woven with uniform thickness yarn thick and clear texture is naturally not easy to fade

Want to add size, color, fabric, shape? Contact us for you to achieve!



The processes we can make for this label

UV process/bronzing silver process/ concave and convex process/Plm covering process/glue dropping process/ Bocking process



About the rope

Webbing categories are: cotton belt (cotton herringbone belt, cotton plain belt, cotton head belt, pants rope belt, etc.), nylon rope belt, PP rope belt, polyester rope belt, rayon rope belt and other various rope belt

Elastic categories include: mercerized rubber band, horse elastic band, knitted (Bat) rubber band, round rubber band, velvet belt or velvet elastic band for bra, etc.



Back of model

Please contact us to start making your samples!



Pullover Reflective printing

High-quality high-end printing series, using high-grade fabrics and cutting, to meet the needs of unlimited, gender free, cross-scene, full-size wear. Provide the ideal choice for your brand.



DTG& Reflective printing

DTG printing combined with reflective printing has more possibilities



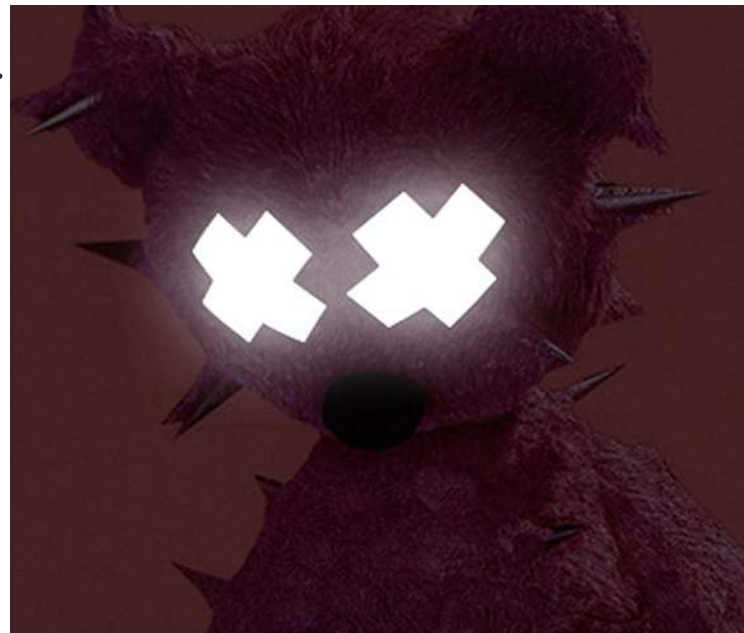
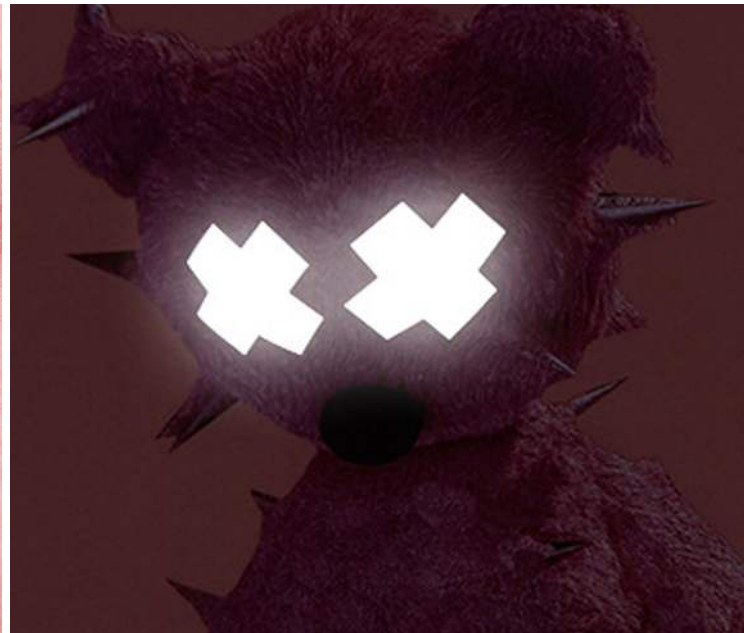
About Reflective printing

The special reflective material glass beads are added into the ink resin and printed directly on the fabric of T-shirts of various colors through the screen. In the place with insufficient sunlight or at night, they can play a warning role through their own luminescence and reflection of external light sources. Fabric suitable for printing all kinds of pullovers



The environment

Using this high-visibility reflective print made of safety clothing, short sleeves and other clothing, whether the wearer is far away, or in the case of light or scattered light interference, can be relatively easy to find.



The fabric information

Texture is Pne and smooth soft fabric texture is Pne and feel smooth and soft, carefully woven texture can be seen

Precise fabric woven with uniform thickness yarn thick and clear texture is naturally not easy to fade

Want to add size, color, fabric, shape? Contact us for you to achieve!



The processes we can make for this label

UV process/bronzing silver process/ concave and convex process/Plm covering process/glue dropping process/ Bocking process



About the rope

Webbing categories are: cotton belt (cotton herringbone belt, cotton plain belt, cotton belt, cotton head belt, pants rope belt, etc.), nylon rope belt, PP rope belt, polyester rope belt, rayon rope belt and other various rope belt

Elastic categories include: mercerized rubber band, horse elastic band, knitted (Bat) rubber band, round rubber band, velvet belt or velvet elastic band for bra, etc.



Back of model

Please contact us to start making your samples!



TUOZHEN®
拓真



Pullover Polar fleece

High-quality polar fleece series, using high-grade fabrics and cutting, to meet the needs of borderless, gender, cross-scene, full-size wear. Provide the ideal choice for your brand.



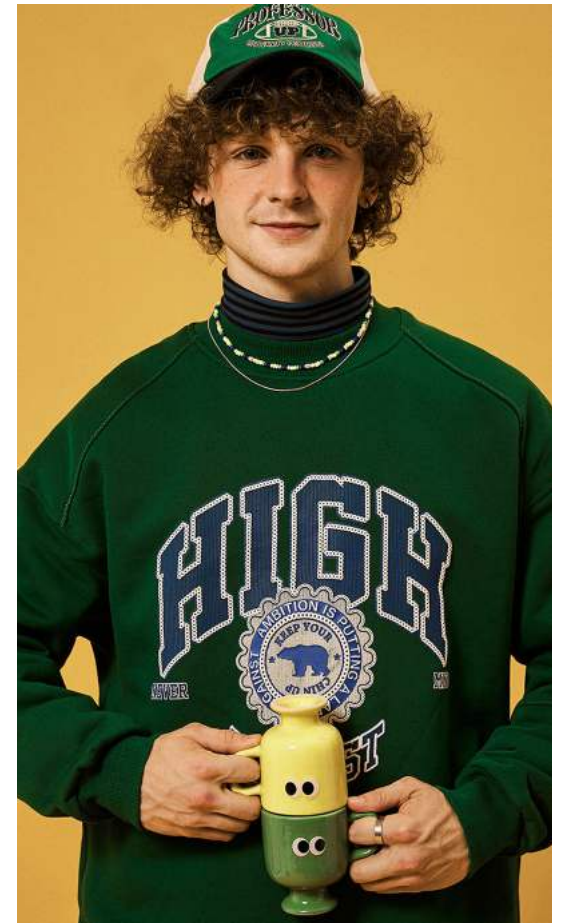
Imitation embroidery printing

The embroidery part of the common imitation embroidery printing fabric in the market is often only empty with the embroidery texture, but it can not be highlighted on the fabric. Due to technical limitations, it is difficult to reflect the fineness, burr and three-dimensional effect of the imitation embroidery pattern on the graph through the existing printing process.



About polar fleece

Polar fleece (also known as sheep pile) is a kind of knitting fabric, woven circle machine, woven fabric after dyeing first, after again hair, combing, and anti-pilling finishing of wool processing technology, positive napped fabrics, anti-pilling fluffy dense and difficult to shed, pilling, opposite thin thin hair, well-balanced, hairs short, texture clear, soft, good elasticity.



Polar fleece features

polar fleece can also be combined with any other fabric to make the cold protection effect better (polar fleece and polar fleece composite, polar fleece and denim composite, polar fleece and lamb composite, polar fleece and mesh fabric composite with waterproof breathable Plm, etc.).



The fabric information

Texture is Pne and smooth soft fabric texture is Pne and feel smooth and soft, carefully woven texture can be seen

Precise fabric woven with uniform thickness yarn thick and clear texture is naturally not easy to fade

Want to add size, color, fabric, shape? Contact us for you to achieve!



The processes we can make for this label

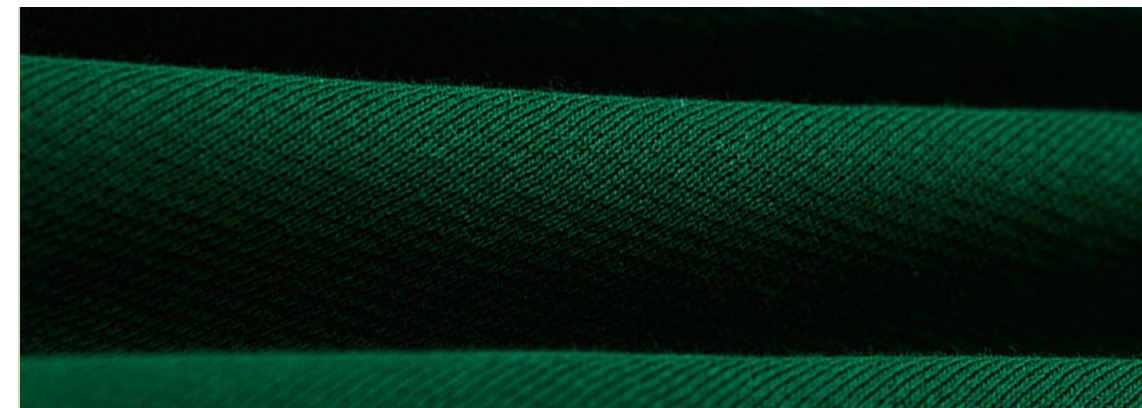
UV process/bronzing silver process/ concave and convex process/Plm covering process/glue dropping process/ Boeking process



About the rope

Webbing categories are: cotton belt (cotton herringbone belt, cotton plain belt, cotton head belt, pants rope belt, etc.), nylon rope belt, PP rope belt, polyester rope belt, rayon rope belt and other various rope belt

Elastic categories include: mercerized rubber band, horse elastic band, knitted (Bat) rubber band, round rubber band, velvet belt or velvet elastic band for bra, etc.



Back of model

Please contact us to start making your samples!